

## 6 Rs of Learning Behaviour



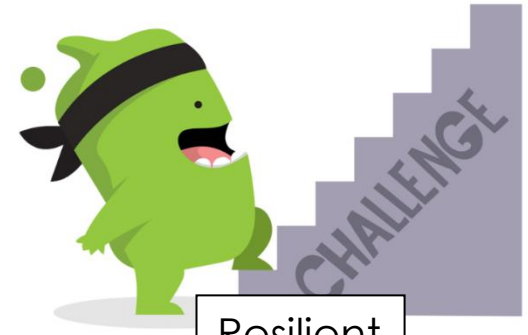
Reflective

We are **reflective** – we think about what we are doing and make changes where we need to.



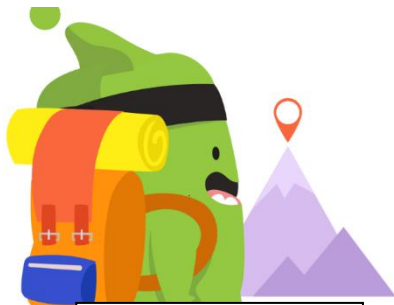
Ready

We are **ready** to learn – we have the equipment we need and we show good learning behaviours.



Resilient

We are **resilient** – we keep on going, even when there is a challenge.



Resourceful

We are **resourceful** – we use all the skills we have been taught to help ourselves and each other.



Respectful

We are **respectful** – we treat each other with kindness and listen when others are speaking, we respect the views of others, even if they are different from our own.  
We look after our school and our environment.



Responsible

We are **responsible** – we understand our choices and actions have consequences.